

Cast Iron Downspout Boot Options

Square & Rectangular Top Bell Sizes

Top Bell	Outlet OD	Available Lengths
3" x 4"	4 1/4", 4 7/8"	16", 20", 24", 28", 32", 36", 40", 44", 48", 52", 56", 60", 64", 68", 72", 76", 80"
3" x 5"	4 1/4", 4 7/8"	
4" x 4"	4 1/4", 4 7/8"	
4" x 5"	4 7/8", 5 7/8"	
4" x 6"	4 7/8", 5 7/8"	
5" x 5"	4 7/8", 5 7/8"	
5" x 6"	5 7/8", 6 7/8"	
5" x 7"	5 7/8", 6 7/8"	
6" x 6"	5 7/8", 6 7/8"	24", 30", 36", 42", 48", 54", 60", 66", 72", 78", 84"
6" x 8"	5 7/8", 7 1/4"	
8" x 8"	8 1/4"	



Round Top Bell Sizes

Top Bell	Outlet OD	Available Lengths
3" Round	4 1/4", 4 7/8"	16", 20", 24", 28", 32", 36", 40", 44", 48", 52", 56", 60", 64", 68", 72", 76", 80"
4" Round	4 1/4", 4 7/8"	
5" Round	4 7/8", 5 7/8"	
6" Round	5 7/8", 6 7/8"	
8" Round	8 1/4"	24", 30", 36", 42", 48", 54", 60", 66", 72", 78", 84"



Product drawings for all downspout boot sizes are available at www.downspoutboots.com. Cleanout option available for all sizes 24" or greater in length.

Coating Options



No Coating
Plain cast iron finish



Primer Coating
Light gray rust inhibitive primer

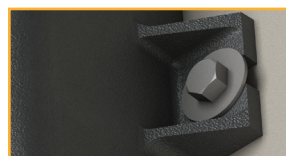


Powder Coating
To view color options, please visit downspoutboots.com/colorchart.php

Accessories



Rubber Couplings
Flexible couplings for durability and ease of installation



Mounting Hardware
For concrete, masonry or brick building walls

Our most popular sizes are in stock and ready to ship!